



Plugging the gaps in energy wastage.



## The challenge

Many companies find they cannot afford high tech new green builds and need low-cost smart solutions that help optimise their existing workplace.

## The solution

Simply Energy has an innovation team that scour the globe looking for smart solutions. US based company, Sapient Industries, who offer a plug load management system, was the perfect fit.

## The results

Still in the trial process in our own offices, Simply Energy plans to offer this system to all businesses.

August 2020

## Simply Energy is on a journey to help customers reduce their energy emissions, through the services and solutions that we offer.

A simple, smart idea to enable companies to make substantial savings without the cost of new high-tech green buildings was the goal.

Enter Sapient Industries, a US based company that offers a smart plug load management system which collects live power consumption data from anything that is plugged into it. The software learns the building and then, through AI algorithms, makes smart suggestions to optimise office equipment.

Simply Energy has established a partnership with Sapient to bring their technology to Australasia. We'll use it in our own offices and also plan to offer it to customers.

## How does the Sapient plug work?

Sapient smart plugs and power boards are plugged into power outlets across the building. These collect live power consumption data on devices plugged into them.

Then, via Wi-Fi, data is collated and centralised via a cloud-based platform based in Australia.

The software 'learns the building' and makes smart suggestions. You can even schedule times to turn individual equipment off when it's not needed, rather than leaving it on when idle.



**“We’ve got big plans for little plugs.”**

## Here are some of the things it can do

**Save you money on your energy** by monitoring, controlling and optimising plug load consumption.

**Recommend improvements** that with a simple press of the button you can accept or override at any time.

**Optimise how you use equipment** by providing detailed utilisation and performance metrics and identifying redundant equipment.

**Help you optimise your floor space** by generating insight on how your office space(s) are currently used.

**Help keep you safe** through machine diagnostics that enhance predictive maintenance and circuit anomalies that may pose a safety hazard.

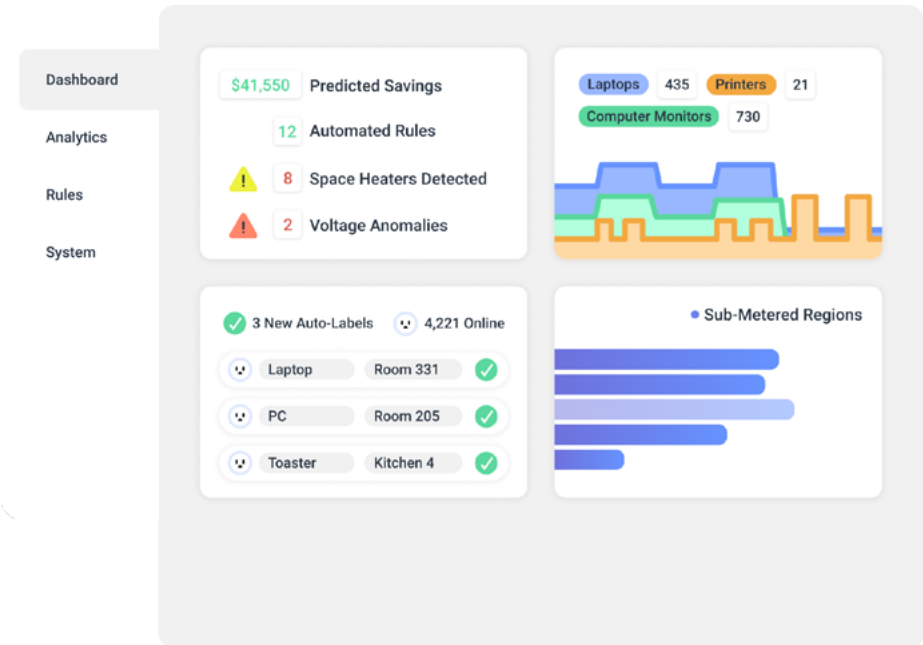
**Enable you to sub-meter any part of your building** all the way down to individual outlet level.

There are a number of environmental benefits too, not least that it can help energy generation companies like Contact manage the need for using fossil fuel generation during peak times.

**Now there's a change that matters.**

**#change  
matters**

## Your dashboard unlocks the power of plug load data analytics.



If you're ready to start your #changematters journey get in touch with James Carberry, Head of Sustainable Opportunities: [james.carberry@contactenergy.co.nz](mailto:james.carberry@contactenergy.co.nz) M: +64 27 304 7720